



FESTOOL

**Easy to control,
virtually unstoppable.**

The new, extremely lightweight
PLANEX LHS 225 - for
maximum sanding efficiency.



**Tools for the
toughest demands**

The *PLANEX* LHS 225 – the specialist for walls and ceilings.

Compact version for cramped conditions ...

You can turn and use the *PLANEX* LHS 225 in any position: the new variable long-reach sander by Festool fits snugly in the hand and is a match for any job with or without the extension. Attach or detach the extension to convert the *PLANEX* to a long-reach or short-reach machine ideal for painters and drywallers - two lengths, one machine stored in a *SYSTAINER*. The material removal capacity of the *PLANEX* is simple unbeatable.



0 cm

25 cm

50 cm

... and extended version for high walls.

A long-reach sander like no other.

Only a few hand movements required to convert the PLANEX LHS 225 to a long-reach sander from the latest generation. 160 cm long and ideal for sanding high walls and ceilings – right up to the edge. Ergonomic and effortless handling.



Extra feature of the PLANEX:

The connection on the PLANEX is so solid that you can even use a second extension. The costs of purchasing a second extension far outweigh the costs for arranging scaffolding.



Invest in a second extension to increase the overall length of your machine to 210 cm so that you can work on high ceilings.



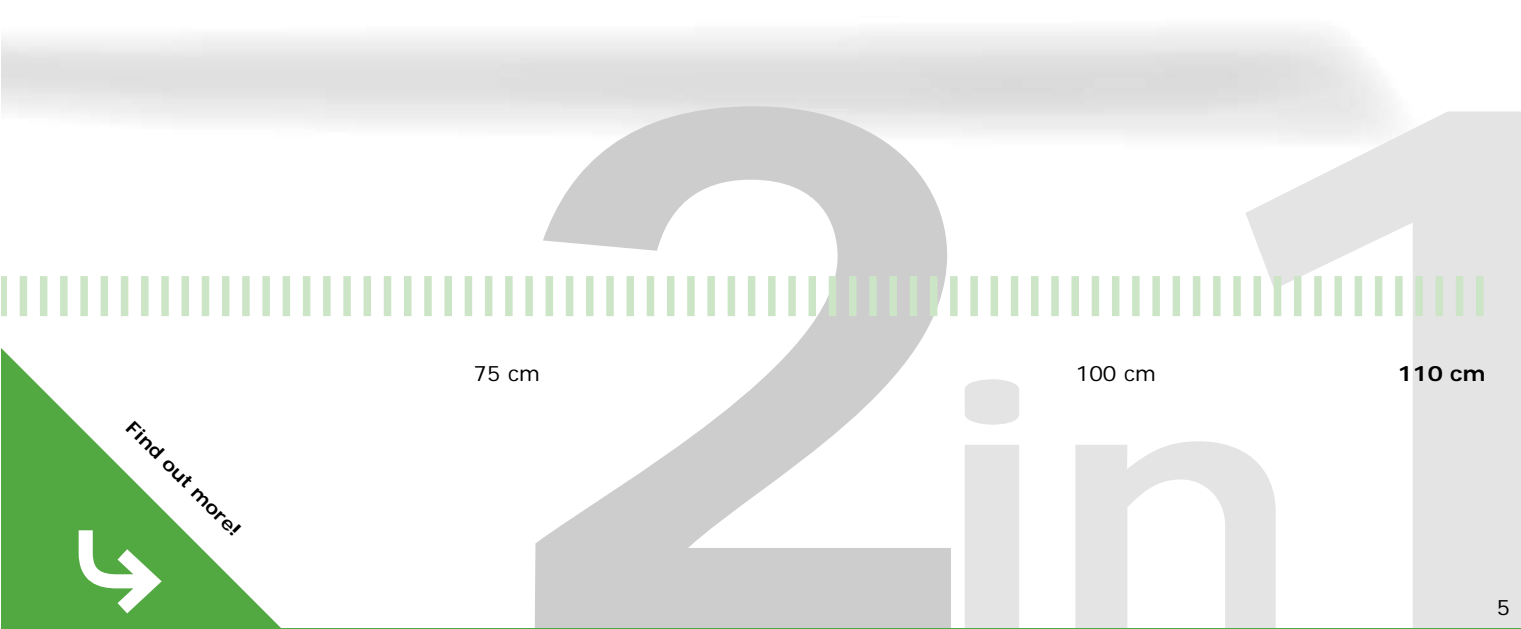
75 cm

100 cm

125 cm

160 cm

Compact and effective.
 Smooth working progress, even when the workplace is cramped. You will be impressed by the quality of the new PLANEX LHS 225 as a short-reach sander. 110 cm long, extremely efficient and not an ounce too heavy.



Find out more!



Sophisticated machine, perfect design.

The new long-reach sander PLANEX LHS 225 is perfect for preparing surfaces in drywall applications.

The machine is length-adjustable, efficient in removing material and more durable than any other machine currently available. The overall concept is just as impressive as the machine performance, right down to the finest detail.



Long service life.

The Festool two-speed drive system guarantees an efficient transfer of force to the sanding pad. The result: extremely efficient material removal and an extended service life.



Variable dust extraction.

The dust extraction system can be set to internal or external extraction. Internal extraction generates a suction effect for easier working (more on page 11).



Detachable brush segment.

Detach the brush segment at the front of the head in a few hand movements and sand right up to the edge.



Large swivelling range.

The versatile joint provides extra flexibility. The pad lies completely flat and sands with maximum efficiency.



Hard-wearing sanding pad.

High-strength MPE plastic and a heat-resistant burr layer make the sanding pad particularly hard-wearing. The white edge has no burr to enable quick pad changes.

Working with the material in mind.

The MMC electronics maintain a constant speed. The dust-protected on/off switch is guaranteed to function reliably during operation in heavy-duty applications.



Complex ergonomics.

Handle fits snugly in the hand for non-tiring work. The softgrip gives extra grip.



Secure connection in seconds.

The simple quick-release attachment system made from robust steel allows you to adjust the length of the PLANEX in a few hand movements.



A firm hold.

The mechanical lock for 36 mm hoses prevents the hose from slipping out of the extractor connector when the machine is swivelled. Excellent dust extraction is guaranteed.



plug-it connection.

Should your power cable develop a fault, you can replace the plug-it cable in seconds.



Suction power adjustment.

Use the extraction control to adapt the suction effect to the respective working situation. The PLANEX seems lighter because of the vacuum and is easier to control.

IPT Interactive Product Tour



Experience the new Festool long-reach sander in action!

If you would like to see the PLANEX LHS 225 in action, we recommend our application DVD ROM with a host of practical application examples. Watch online or order a copy at www.festool.de. Alternatively, fill in the enclosed card.

The ultimate long-reach sander.

Generating power for your requirements.

Instant length adjustment



Two lengths - one machine.

The quick-release connector allows you to adapt the length of your machine to the task in hand in a matter of seconds. Convert your machine from a short-reach to a long-reach sander PLANEX LHS 225 and vice versa in just a few hand movements

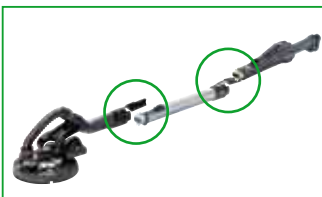
The benefits to you:

- One machine for different length requirements
- No tools required to adjust the length
- Robust, extremely durable connection



It's as simple as that:

First of all, disconnect the power supply with a single click before opening the two clamp levers that connect the head and handle.



Open the clamp levers on the head section and extension. Insert the extension. Close the clamp levers, connect the power. Done.



It only takes a few seconds to convert from a short-reach to a long-reach sander and vice versa.

Suction power adjustment



Outstanding results with minimum effort.

The PLANEX LHS 225 uses the 8-hole sanding pad system to extract sanding dust reliably while enabling the PLANEX to adhere to walls and ceilings. Use the wheel to adjust the vacuum to the perfect setting for easy machine guidance.

The benefits to you:

- Perfect balance between guidance and reduced weight*
- Flat contact surface for efficient material removal



It's as simple as that:

Set the required suction effect by adjusting the wheel on the handle.



The 8-hole suction system extracts dust from the sanding pad and creates a vacuum for the suction effect.*

Enormous material removal capacity



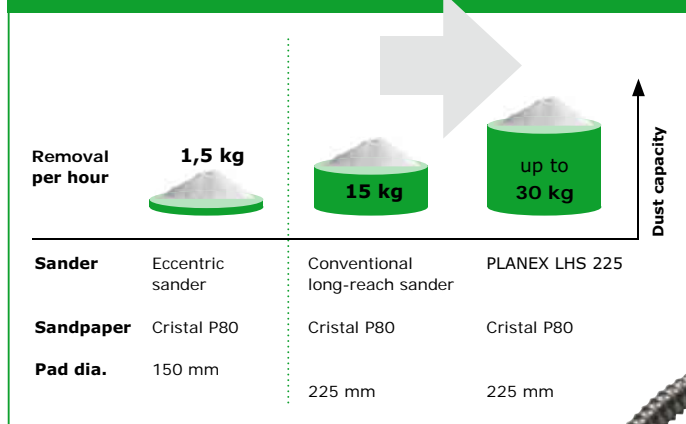
Unlike any other sander.

The power of the two-speed motor and direct transfer of force make a significant contribution to the outstanding material removal rate of the PLANEX LHS 225. As a market leader capable of removing up to 30 kg of material per hour, the PLANEX LHS 225 is in a class of its own.

The benefits to you:

- **Extremely efficient material removal for perfect working results**
- **Non-tiring work, saves time**

Twice as efficient



Source: Festool testing laboratory 1/2007

Tidy storage in the MAXI SYSTAINER



Typical Festool: convenient transportation.

The PLANEX LHS 225 is packed away tidily in a handy MAXI SYSTAINER. You always have the right tools and accessories to hand, your tool is well protected and you make a professional impression with your customers. The MAXI SYSTAINER provides storage space for a second extension.

The benefits to you:

- **Safe, clean transportation**
- **Professional impression at the construction site**
- **Everything close at hand for efficient working progress**
- **The MAXI SYSTAINER provides storage space for the second extension**



Outstanding power and a host of good ideas.

Impressive features.

Detachable brush segment



Reaches up to the edge with ease.

When sanding the area between two adjacent walls or a ceiling and wall: the PLANEX LHS 225 produces consistent results when sanding right up to the edge.

The benefits to you:

- Change tools with a single hand movement
- Sand right up to adjacent edges
- Sanding in narrow spaces



It's as simple as that:

Press down the lock and remove the brush segment.



Detach the brush segment to sand along adjacent edges and in awkward spots.



The detached brush segment can be stored in the lid of the MAXI SYSTAINER and retrieved when needed.

Mechanical hose lock



Designed for maximum stability.

The PLANEX LHS 225 is an extremely solid machine. The mechanical lock on the extraction hose is just one of many details that demonstrates the robust nature of the PLANEX. The lock prevents the hose from slipping out during use. The PLANEX LHS 225 always provides reliable extraction – in any position.

The benefits to you:

- Hose does not slide off
- Efficient dust extraction in any position



It's as simple as that:

Open the lock with a single click.



Attach the extractor connector on the 36 mm hose.



Close the mechanical lock with a single click.

You can also work with a 27 mm extractor hose (without hose lock).

Robust drive system



Endless power.

The robust two-speed drive system transfers the power efficiently to the sanding pad and ensures a long service life.

The benefits to you:

- Maximum utilisation of the motor power
- Extremely efficient material removal
- Durable for an extended service life



Perfect centre of balance:

The centre of balance of the PLANEX is in the machine head. The sanding pad lays flat on the surface and the PLANEX LHS 225 is easy to guide as a result.

Free selection of dust extraction type



External for coarse work, internal for fine work.

The PLANEX LHS 225 offers two options for extracting dust: internal extraction for fine dust particles or external extraction for heavy-duty materials such as wallpaper residue. The 8-hole internal extraction system generates a suction effect*.

The benefits to you:

- Reliable extraction of dust, fine particles and heavy-duty material
- Minimal clogging



External suction ideal for extracting larger particles such as wallpaper residue.



The 8-hole internal extraction system collects fine dust particles enables the PLANEX to adhere to walls and ceilings. The suction power is controlled individually via a separate adjusting wheel.

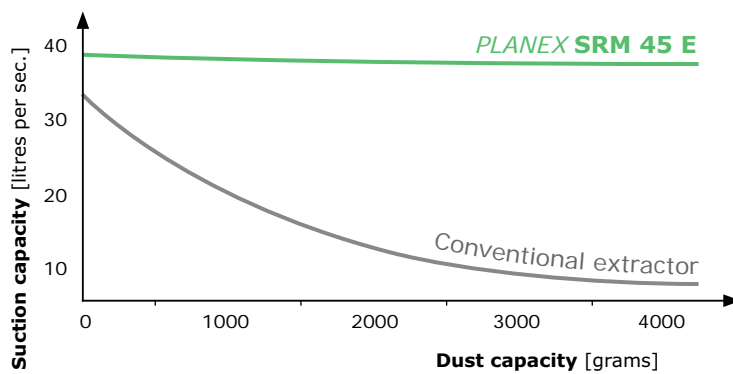
* In combination with the PLANEX special extractor SRM 45 E and perforated PLANEX abrasive.

Extraction makes the difference.

Dust extraction with system



Comparison of suction performance



Source: Festool testing laboratory 1/2007

The *PLANEX* set – extra power for higher rooms.

The new *PLANEX* really gets stuck in, removing up to 30 kg of material per hour. We have also developed the new compatible *PLANEX* special extractor SRM 45 E with automatic filter cleaning system so that the sanding dust is collected with the utmost efficiency. This manoeuvrable extractor follows your every move, providing maximum efficiency and constant suction power. For perfect working results, a clean building site and most importantly, a healthy working environment.



We recommend that you always use a class M extractor when working with the *PLANEX* long-reach sander LHS 225.

PLANEX SRM 45 E – the extraction specialist for every task.

The extremely powerful *PLANEX* special extractor SRM 45 E is more than capable of extracting large volumes of dust generated by the *PLANEX* LHS 225. The *PLANEX* LHS 225 and the *PLANEX* special extractor form an unbeatable team.

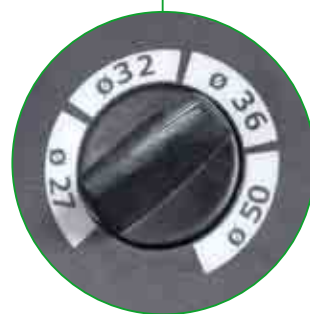
The benefits to you:

- Filter cleaning system achieves constant suction power
- Extracts fine dust, ideal for painters and drywallers
- Approval for dust category M*



Automatic electronic switch-on/shut-off.

The extractor starts automatically when the long-reach sander is switched on. The machine also has a smooth start-up and a shut-off delay function.



FlowDetect flow monitor.

FlowDetect monitors the air volume flow in relation to the hose diameter and issues an acoustic warning signal if the air speed falls below 20 m/sec.



Infinitely variable suction power adjustment.

Like all features on the extractor, the suction power can also be adapted to your requirements. From extremely powerful to weak.

* Safe extraction of dust with MAC values greater than 0.1 mg/m³ such as plaster and wood dust.



Practical tool holder.

The holder provides a stable surface for setting down the PLANEX and storing abrasives. Before transporting the machine, simply wind the hose around the holder and insert the end in the top.



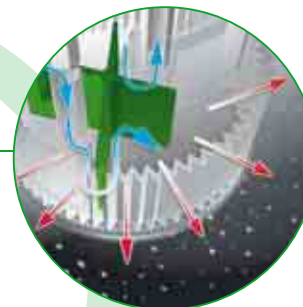
Tidy storage.

The mains cable is stored on the cable holder.



Antistatic package.

A package that provides effective protection against static charging.



Constant suction power.

The automatic filter cleaning system cleans fine dust from the filter at regular intervals to maintain a constant suction power.



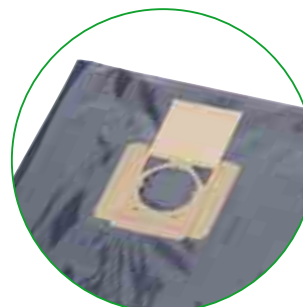
Dirt-resistant filter.

The PET filter fleece is dirt-resistant and does not clog as quickly.



No rolling.

Step on the locking brake to stop the special extractor from moving. An effective solution that prevents the extractor from rolling during transportation or while you are working.



Dust-free disposal.

When disposing of large quantities of dust, the disposal bag prevents dust from puffing into the air and combines with the automatic filter cleaning system to achieve maximum suction power.



A question of class.

PLANEX long-reach sander LHS 225



Applications

- Sanding plasterboard and dry wall filler
- Removing wallpaper residues

Features

- Two lengths, one machine - extend or reduce in a few simple hand movements
- Two-speed gears for efficient, rapid material removal on walls and ceilings
- Perfectly balanced for easy handling
- Robust, reliable drive components and efficient power transfer
- Adjustable suction power decreases the perceived weight of the machine
- Detachable brush segment allows sanding up to the edge

Technical data

Power consumption	500 W
Speed	310 - 920 rpm
Max. speed	920 rpm
Sanding motion	Rotation
Sanding pads	dia. 215 mm
Abrasives	dia. 225 mm
Connection for dust extraction	dia. 36 mm (dia. 27 mm)
Weight when machine 1.10 m in length	3.8 kg
Weight when machine 1.60 m in length	4.6 kg

Version

	Scope of delivery	Order no.
①	PLANEX long-reach sander LHS 225 EQ-Plus 1x sanding pad dia. 215 mm (soft), 1x sanding disc Cristal P80, plug-it cable 4 m, in SYSTAINER SYS MAXI	571574

PLANEX special extractor SRM 45 E



Applications

- Accessory for the PLANEX LHS 225 long-reach sander, suitable for sanding large surfaces and substantial amounts of filler
- Also suitable for all types of cleaning work in the workshop and at the assembly site

Features

- Filter cleaning system that cleans the filter pores without interrupting work
- Two-speed turbine for maximum suction performance
- Locking brake for extra stability
- Antistatic package
- Approved for class M dust with MAC values greater than 0.1 mg/m³ such as plaster and wood dust

Technical data

Power consumption	350 – 1200 W
Max. suction capacity	3600 l/m
Vacuum	2300 Pa
Container volume	45 l
Filter surface area	7800 cm ²
Maximum appliance socket load	2400 W
Mains cable	7.5 m
Weight	16 kg

Version

	Scope of delivery	Order no.
②	PLANEX special extractor SRM 45 E 1x tool holder for PLANEX LHS 225, suction hose dia. 36 x 3.5 m-AS/LHS 225, 1x disposal bag, 1x cable hook, in a carton	583057

Version

	Scope of delivery	Order no.
	PLANEX long-reach sander LHS 225 EQ-Set PLANEX long-reach sander LHS 225, as described above, with 25x sanding discs Cristal P80, PLANEX special extractor SRM 45 E, as described above	583474



Well equipped with the PLANEX power set.

System overview and accessories



System accessories

	Explanations/Dimensions	Order no.
③ Sanding pad ST-STF-D215/8-LHS 225	For PLANEX LHS 225 EQ, for universal use on flat surfaces, soft version, temperature-resistant burr, hole circle diameter 70 mm	495168
⑦ PLANEX brush segment BS-LHS 225	Replacement brush segment for the PLANEX sanding head	495166
⑧ Brush insert BE-LHS 225	Replacement brush ring for the PLANEX sanding head	495167
⑨ Extension VL-LHS 225	For extending the LHS 225 via the quick-release attachment system	495169
⑩ SYS MAXI SYS-LHS 225	SYSTAINER SYS MAXI for PLANEX long-reach sander LHS 225	495193
⑪ plug-it mains cable	For rapid replacement of faulty cable, rubber, length: 4.0 m	489421
⑫ Absolute filter AB-FI SRM 45-LHS 225	Dirt-resistant PET filter fleece for dry extraction	495016
⑬ Disposal bag ENS-SRM 45-LHS 225	Designed for PLANEX special extractor with filter cleaning system, for fine dust collection and dust-free disposal; pack of 5	495015
⑭ Filter bag FIS-SRM 45-LHS 225	Hard-wearing, double-wall filter bag. Not suitable for use with PLANEX long-reach sander LHS 225. Pack of 5	495014
⑮ PLANEX extraction hose dia. 36 X 3.5M-AS/LHS 225	Suction hose dia. 36 mm for PLANEX special extractor SRM 45 E	495000
⑯ PLANEX reducing sleeve dia. 36 mm-AS-LHS 225	Reducing sleeve for existing hoses dia. 36 mm, for mechanical hose lock dia. 36 mm	495013
⑰ PLANEX tool holder WHR/SRM 45-LHS 225	Tool holder for storing the PLANEX LHS 225 on the PLANEX special extractor SRM 45 E	495155
⑱ PLANEX tool holder WHR/CT-LHS 225	Tool holder for storing the PLANEX on CT/CTL/CTM mobile dust extractors*, simple attachment via Sys-Dock (accessory); * Only suitable for light renovation work.	495017

Abrasive, 225 mm diameter, 8-hole suction system

Exclusive abrasive for the PLANEX LHS 225!

- ④ **FESTOOL Saphir**
High-performance abrasive for sanding coarse concrete surfaces or roughening wallpapered surfaces.
- ⑤ **FESTOOL Cristal**
High-performance abrasives for repair compound and paint. Sparse grit coating for coarse sanding, ideal for painters.
- ⑥ **FESTOOL Brilliant 2**
High-performance abrasives for repair compound and paint. For sanding demanding surfaces.

Grit	Qty. in pack	Order no.
P24	25	495174
P36	25	495175
P40	25	495069
P60	25	495070
P80	25	495071
P100	25	495072
P120	25	495073
P150	25	495066
P180	25	495067
P220	25	495068

Pick up a copy of the Festool main catalogue, visit your local specialist dealer or www.festool.de for further information

News and promotions

Online product catalogue

Dealer search

Service

Application examples

3D animation

Your link to more information...

On the Festool site you can find information about

- New products
- Helpful application examples
- Our comprehensive service offer
- The complete product range
- Product features in detail

and all of this at your leisure.

FESTOOL

www.festool.com

Festool GmbH Export Department

Wertstraße 20
D-73240 Wendlingen
Phone (+49) 70 24/804-640
Fax (+49) 70 24/804-724
E-mail: ebg@tts-festool.com

www.festool.co.za

Head Office South Africa TTS Tooltechnic Systems (Pty) Ltd

22-26 Electron Avenue
Isando 1600
Phone 0027-11-570-28 80
Fax 0027-11-392-56 25
E-mail: RowenaD@festool.co.za

www.festool.com

Тултехник Системс ЕООД

Бул. "Христофор Колумб" No 9
1592 София
Тел.: 00359-2-9600 742
Факс: 00359-2-9600 743
E-mail: office@festool.bg

Three Years warranty – that means three years security



Festool grants a 2 year warranty from the date of purchase, as long as the tool has been used correctly. This warranty is automatically extended by a further year, provided that the warranty form with every new tool is completed correctly and returned within 30 days of the date of purchase.

Make a contribution yourself – support the WWF together with Festool!



Our most important contribution to preserving our environment is the quality of our products, which are characterised by their durability and positive eco-features such as recyclability and environmental compatibility.

By purchasing one of the promotional products, you are supporting our collaboration with the WWF and receive a WWF panda keyring pendant as a thankyou gift.

© 1986 Panda symbol WWF – World Wide Fund For Nature
(Formerly World Wildlife Fund)
® „WWF“ and „living planet“ are WWF Registered Trademarks

www.festool.com/wwf

Dealer

